

Annex D:



# City of York Concept Drawings.

28055



**ORDER PACKET**



## IMPORTANT DOCUMENT

### ABOUT THIS DOCUMENT

This document is a visual representation based on our interpretation of your requirements. We require your confirmation that it meets your requirements in every detail before we can proceed with production.

The specification that follows has been put together with care but may contain misinterpretations of your requirements and it is the responsibility of our customers to ensure there are no errors. Any amendments or changes to the products may require re-quoting and revised lead times.

By returning this document with your approval you are agreeing that we have interpreted your requirements correctly and that your job is ready to be manufactured.

The job may also be liable to re-quoting if a final approval is not confirmed within 2 weeks of receiving this document.

### BUILD

This document must be approved as a whole before it can be queued for production. Once approved the job will be added to the manufacturing schedule and any subsequent changes to specifications may require re-quoting and revised lead times.

### PRINT

All images will be printed at the quality at which they are supplied. We do not proof read your artwork. All RGB colours will be automatically converted to CMYK or Pantone colours due to our CMYK printer, the colours you see on a screen may appear differently once printed. Any subsequent changes to artwork may require re-quoting and revised lead times.

Please provide all images as separate files, in Jpeg or Tiff format at highest quality available. For logos the preferred file types are EPS or SVG, however a high quality Jpeg or PNG may suffice.

### SUPPLYING ARTWORK

For artwork that needs to be modified in any way by Landmark please supply one of the following. We will provide a quotation for studio time. *If you require text to be added or reformatted, please supply option one.*

#### Option 1 - Package

- A packaged Adobe InDesign/Illustrator file, please ensure all images are the exact files used on the document
- Provide all Fonts used. If Landmark have to source fonts to open your file, further costs will incur.

#### Option 2 - Embed

- PDF only
- Please ensure all images are embedded and fonts are outlined. Please note once fonts are outlined only minimal modifications can be made to the design of the panel.

### HAVE YOU CHECKED

QUANTITIES

OVERALL DIMENSIONS / PROPORTIONS

ABOVE AND BELOW GROUND MEASUREMENTS

FACES AND ORIENTATION

MATERIALS

ENGRAVINGS

IMAGES AND PRINT

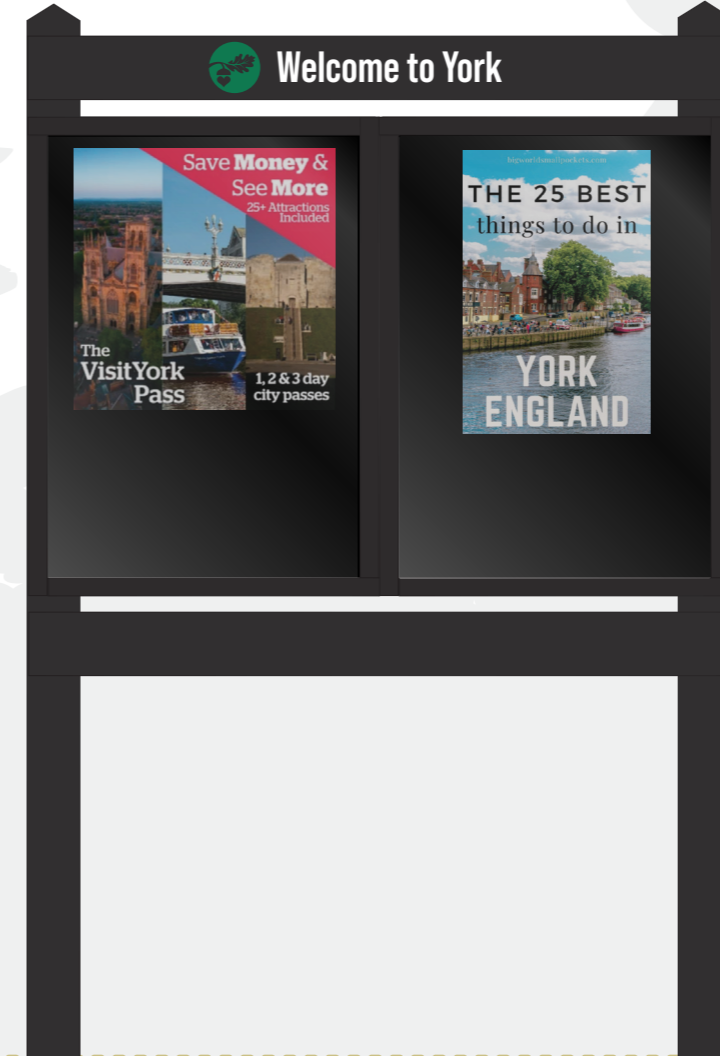
COLOURS (RALS)

FONT

SPELLING

CUSTOMISATIONS / STYLISATION

BUDGET



#### WELCOME YORK RD TOTEM

- Dimensions – 2200mm x 600mm
- Dual aspect, two of the same cut-out panels with white backing.
- Bolt down fixing

#### WEST END TOTEM

- Dimensions – 2200mm x 600mm
- Front face cut-out panel with white backing.
- Reverse to be plain solid
- Bolt down fixing

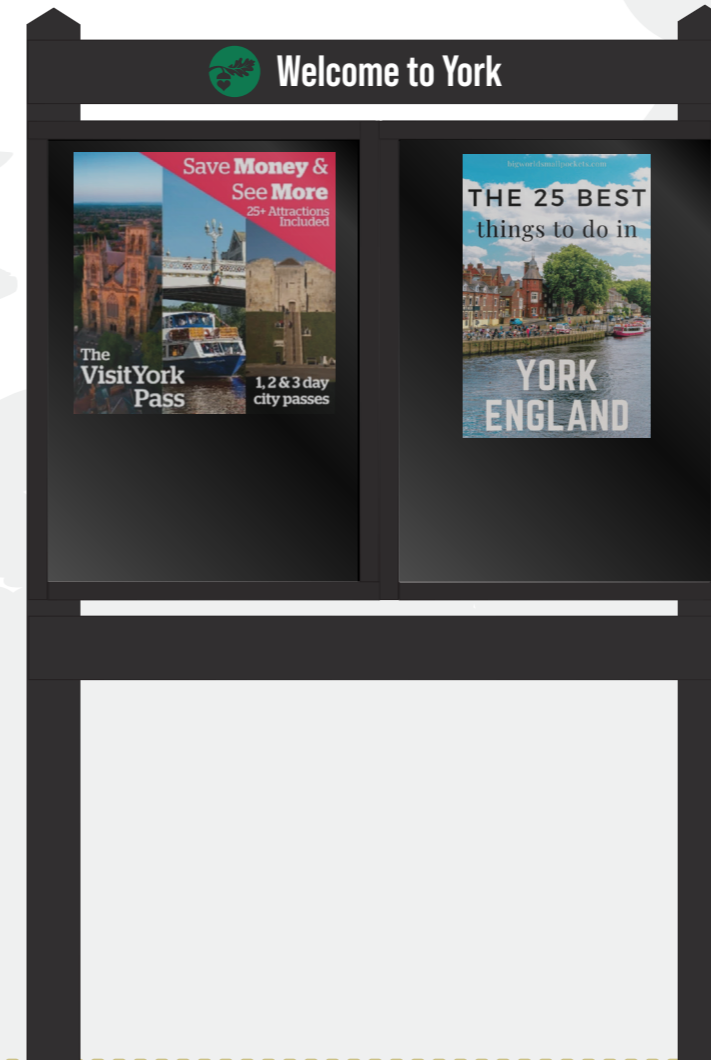
#### NOTICE CASE

- Hatfield Face Fixed (Post Mounted) Notice case -
- Black A0L (2xA1P) with header panel
- Engraved and painted
- Root-fixed

#### FINGERARM

- Double Sided End Mounted Sign
- 550mm x 150mm (face to view)
- Square cut end Profile Cut
- Self Adhesive Digital Print 550mm x 150mm
- Powder Coated to RAL 9005 (Jet Black Gloss) frame system
- Stainless Steel Screwband C/W Quick Release Buckle, for use with 44mm 217mm diameter profiles





**WELCOME YORK RD TOTEM**

- Dimensions – 2200mm x 600mm
- Dual aspect, two of the same cut-out panels with white backing.
- Bolt down fixing

**WEST END TOTEM**

- Dimensions – 2200mm x 600mm
- Front face cut-out panel with white backing.
- Reverse to be plain solid
- Bolt down fixing

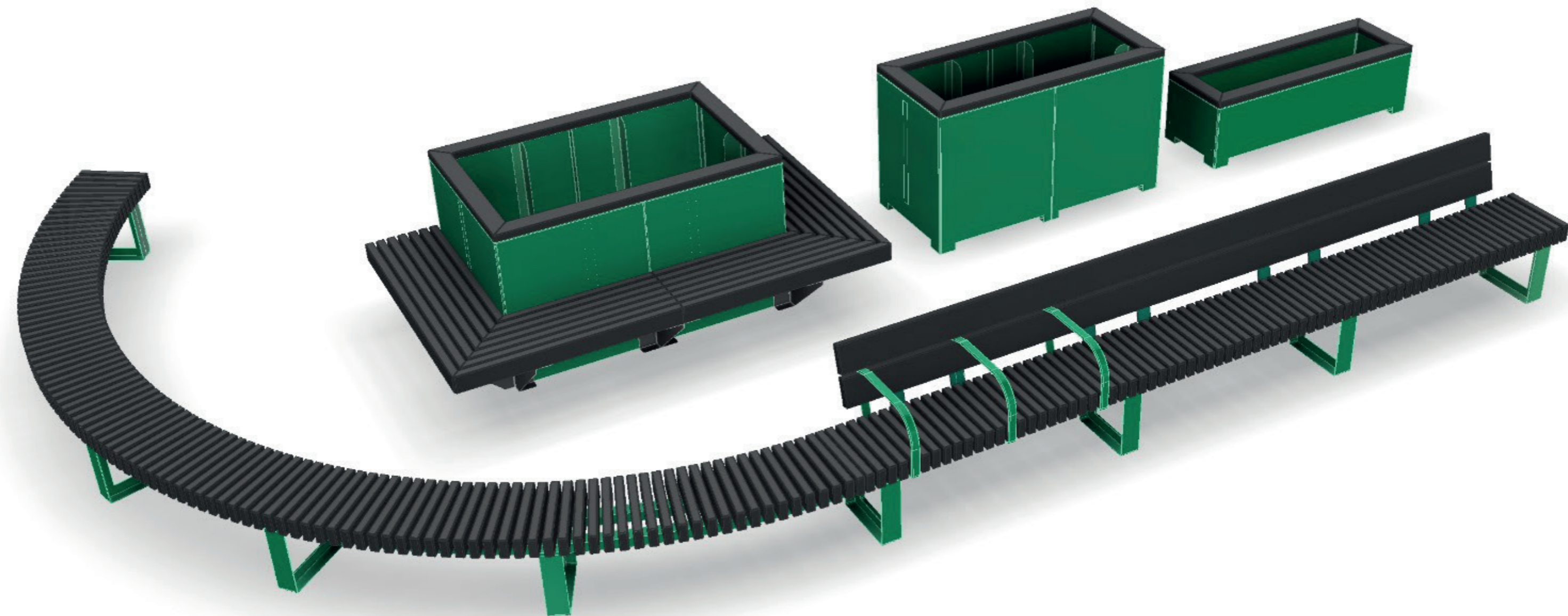
**NOTICE CASE**

- Hatfield Face Fixed (Post Mounted) Notice case -
- Black A0L (2xA1P) with header panel
- Engraved and painted
- Root-fixed

**FINGERARM**

- Double Sided End Mounted Sign
- 550mm x 150mm (face to view)
- Square cut end Profile Cut
- Self Adhesive Digital Print 550mm x 150mm
- Powder Coated to RAL 9005 (Jet Black Gloss) frame system
- Stainless Steel Screwband C/W Quick Release Buckle, for use with 44mm 217mm diameter profiles





**FURNITURE**

- Bespoke Bench With Backrests and armrest on straight section  
Powder-coated steel construction RCP (Black) seating and backrest  
slats Overall length 7200mm x 4700mm. 450mm width of seat.

- Metro 440 (Square Planter) 2000mm x 1000mm x 900mm depth  
(with RCP top frame)

- Metro 440 (Square Planter) 1000mm x 500mm x 450mm depth  
(with RCP top frame)

- Metro 440 (Square Planter) with three sides RCP (Black) seating  
Planter: 2500mm x 1400mm x 900mm depth (with RCP top frame)



0808 129 3773  
enquiries@madebylandmark.com  
www.madebylandmark.com

### We can help you with:

- Branding and concept proposals
- Visitor experience enhancements
- Interpretation and graphic design
  - Wayfinding and site surveys
  - Fabrication and installation
- Maintenance and product care

## Accreditations

